

SOLAR MOUNTING RACK

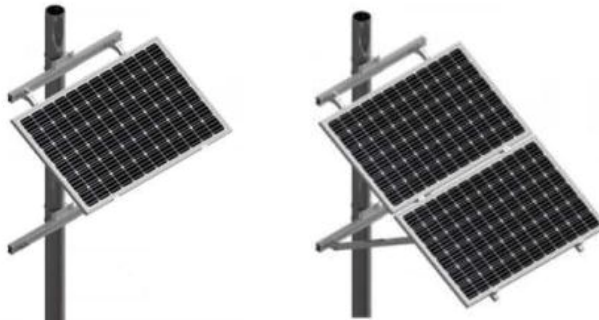
Estructura para Montajes de Paneles Solares



Estructura cubierta metálica



Estructura teja de barro

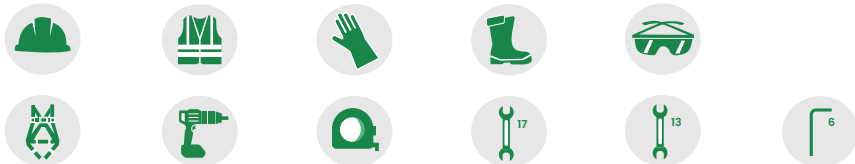


Estructuras elevadas



Estructura suelo

Equipos y herramientas de protección



| | | |
|--|--|--|
| Función: Montaje para paneles solares | | |
| Material Aluminio Anodizado | Fabricante Xiamen Wanhos Solar Technology Co., Ltd | Marca Wanhos |
| Norma IEC 62321 |  AOCXMDN210709-28199A-13 |  R60039368 |

SOLAR MOUNTING RACK

Estructura para Montajes de Paneles Solares



Referencia: SR-S The rail splice
Nombre: U Clamp Falcat (Unión)



Referencia: WIK-05 L feet Hook-05
Nombre: L Clamp Falcat (Ele)



Referencia: WIK-T-02 Tile Roof Hook-T-02
Nombre: Soporte Teja de Barro



Referencia: WIK-MAD Adjustable
Mid Clamp(30-45mm)
Nombre: M Clamp Falcat (Intermedio)



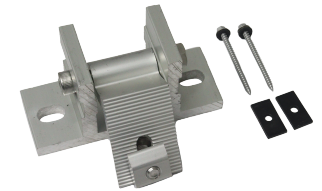
Referencia: SR-xxx The rail
xxxmm
Nombre: Riel de x.xm Aluminio
Anonizado



Referencia: WHS-WG-GL-U
Ground lug
Nombre: Conector de tierra
para estructura



Referencia: WIK-EAD Adjustable End Clamp
(35-60mm)
Nombre: F Clamp Falcat (Final)



Referencia: WAD-FL Front Legs 01
Nombre: Estructura de Piso Soporte
Inferior



Referencia: WAD-RL 15-30° Adjustable
Rear Legs 15-30°
Nombre: Estructura de Piso Soporte
Superior



Referencia: WHS-WIK-07 Trapezoid
Metal Roof Hook WIK-07
Nombre: Soporte de Teja
Trapezoidal Metálica

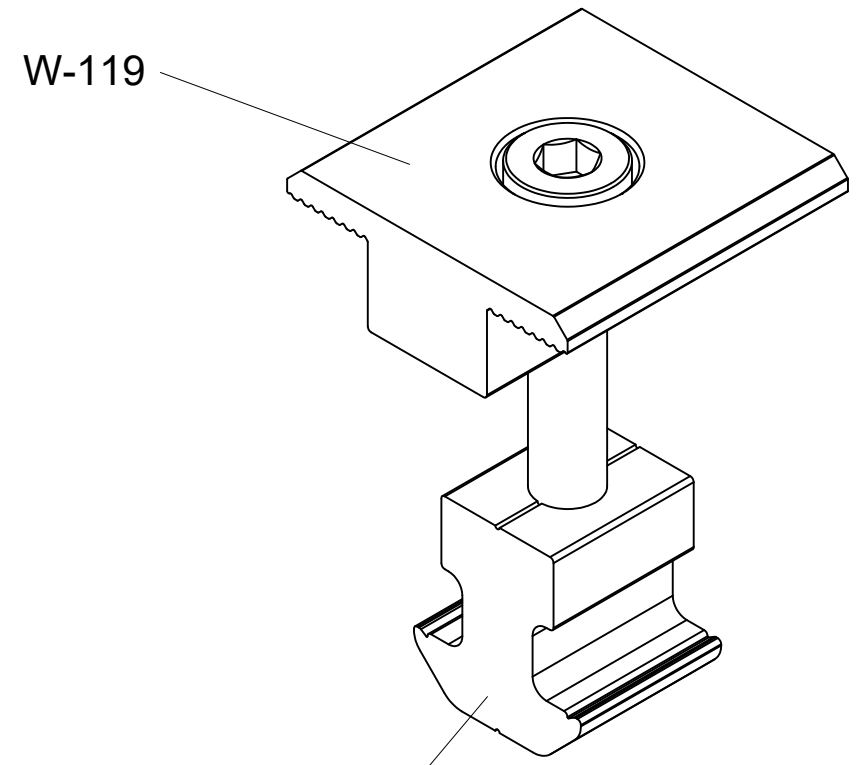
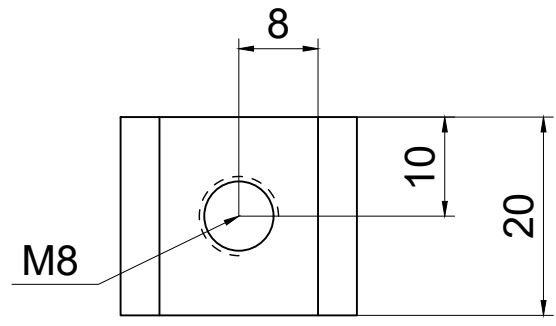
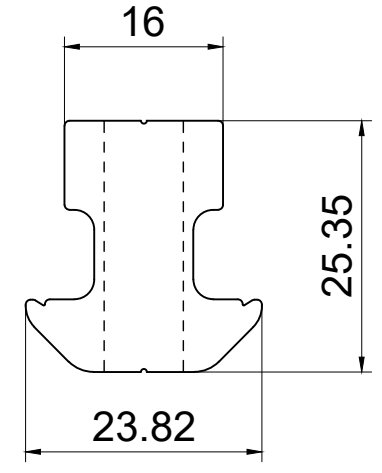
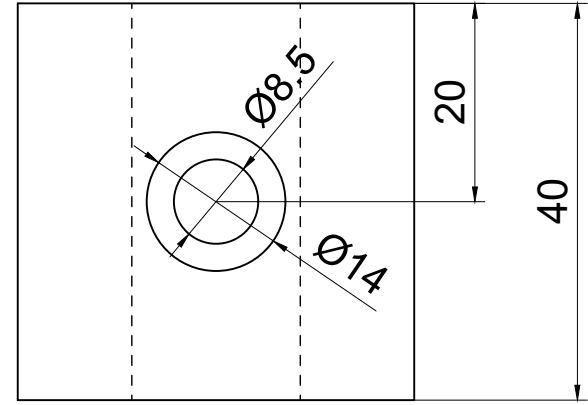
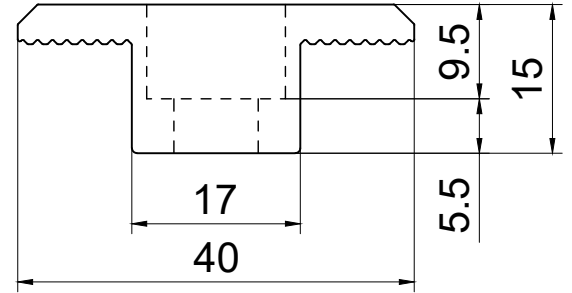


Referencia: WHS-WIK-U-250 Roof Rail
Profiles U01
Nombre: Miniriel de 25mm Aluminio
Anonizado



Referencia: WHS-WG-GC-A Ground Cip
Nombre: Clip M Clamp Falcat (Intermedio)

| Part Name | Material | Qty |
|---------------|-----------|-----|
| W-119 | AL6005-T5 | 1 |
| W-129 | AL6005-T5 | 1 |
| Bolt M8x40 | SS304 | 1 |
| Spring washer | SS304 | 1 |



W-129

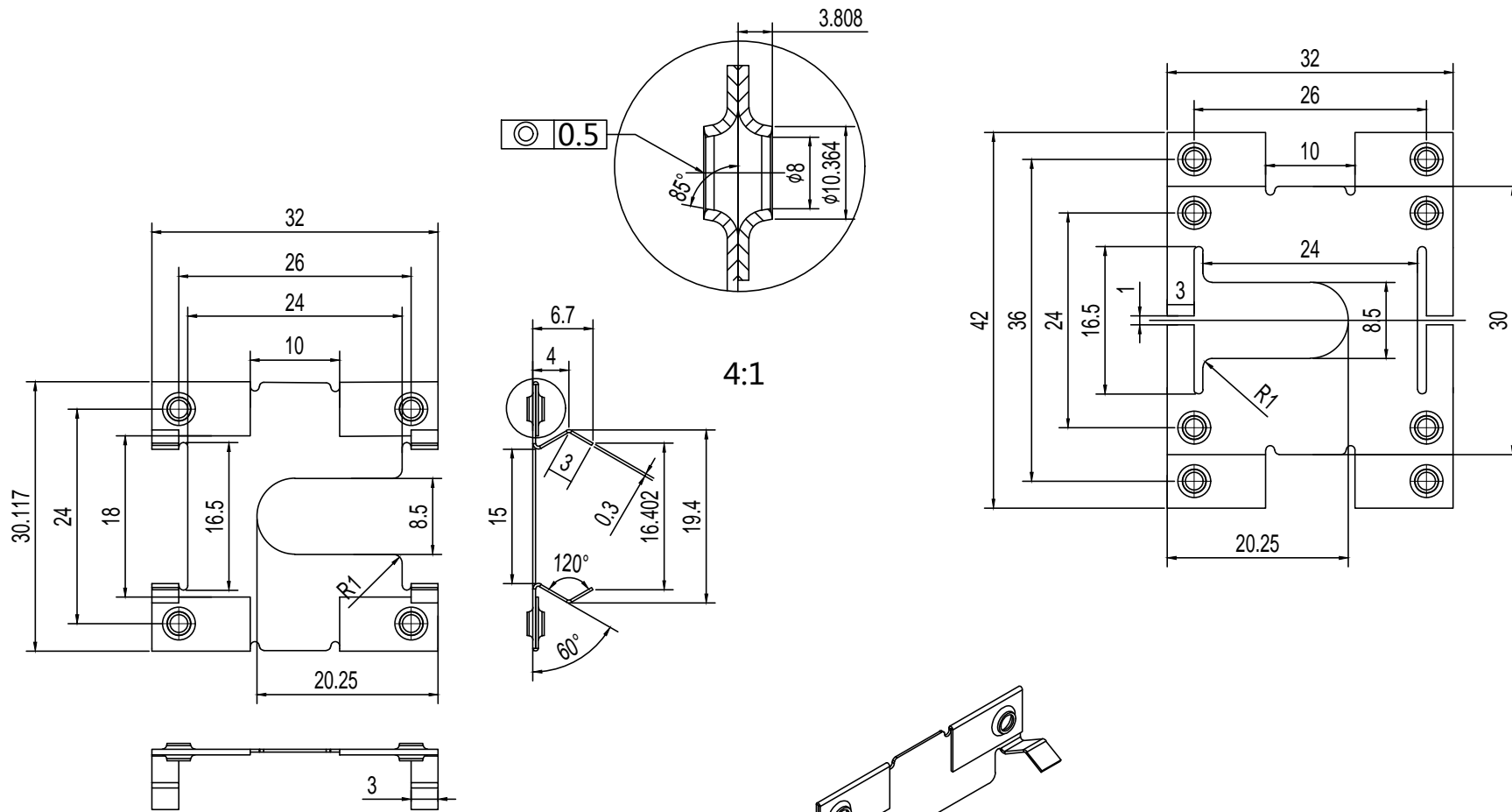
Technical requirement :
 1. Material: 6005 Aluminum anodization.
 2. There is no oil pollution, cracks, corrosion spots, peeling and bad bubbles on the surface of aluminum material.
 3. There is no bending, distortion, deformation and bulge on the sectional view of rail, which is with a flatness of 0.1.

| Tolerance Range | |
|-----------------|------|
| Metric | mm |
| 10≤ | ±0.1 |
| 11-30 | ±0.2 |
| 31-50 | ±0.3 |
| 51-70 | ±0.4 |
| 71-100 | ±0.5 |
| View | |
| Scale | 1:1 |
| Unit | mm |

| | |
|-----------|-----------|
| Date | 202307018 |
| Drawn No. | WIK-MAD |
| Weight | 8.5kg |



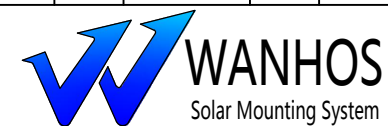
| 版别 | 记号 | 变更记录 | 签名 | 时间 |
|----|----|------|----|----|
| △ | | | | |
| △ | | | | |
| △ | | | | |



技术要求

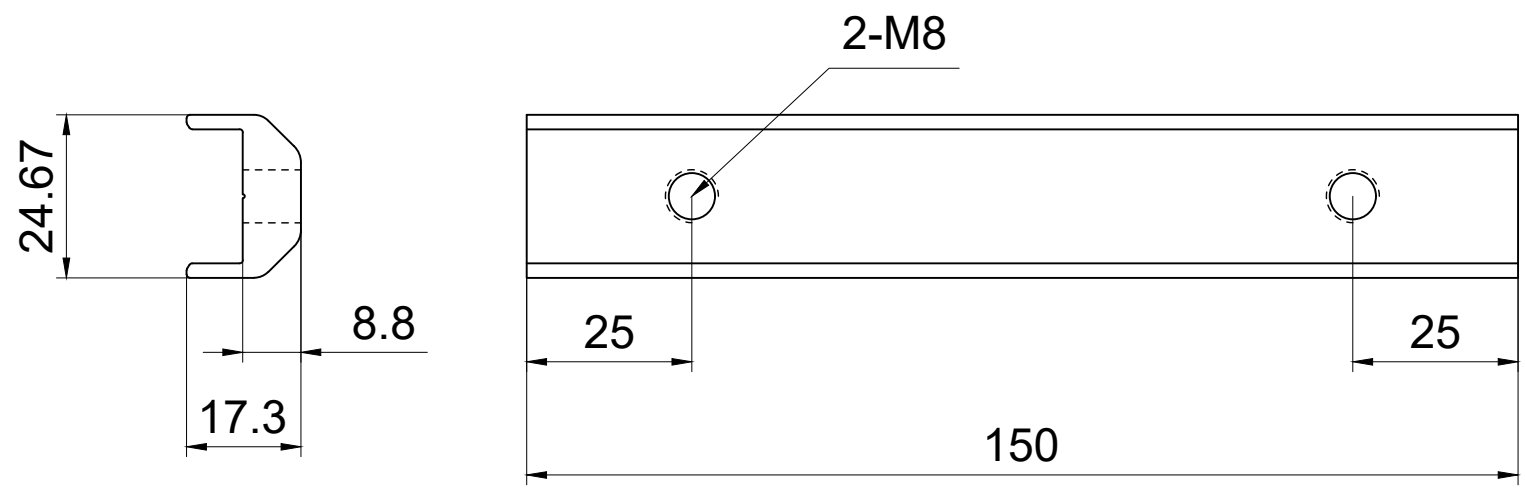
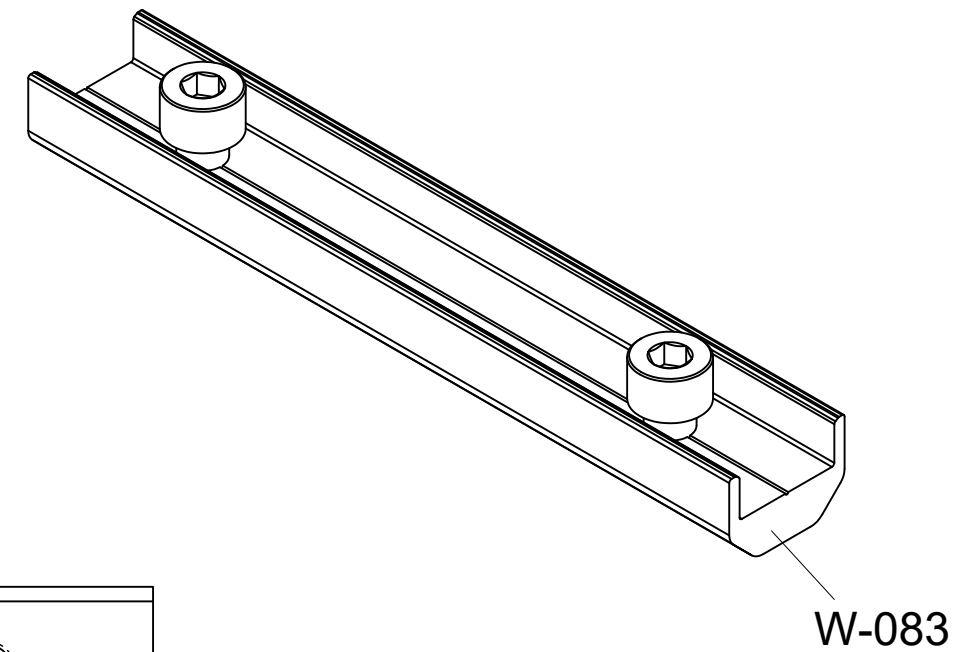
1. 采用不锈钢304板材，厚度为 0.3 ± 0.07 mm；
2. 未注倒圆角为R0.2mm；
3. 未注形状及位置公差为（GB/T13914-2002）ST9等级；
4. 表面要求光亮整洁，断面平整，无毛刺

| | | | | | | | |
|----|-----|----|------------|------|--------|-----|-------------|
| 设计 | 曾明师 | 日期 | 2018/05/14 | 材料 | SUS304 | 图号 | WHS-WG-GC-A |
| 绘图 | 曾明师 | 日期 | 2018/05/14 | 重量 | | 图名 | 中压导电片 |
| 核准 | 曾明师 | 日期 | 2018/05/14 | 表面处理 | | 机种 | |
| 承认 | | 日期 | | 版本 | 第一版 | 模具号 | |



| | |
|----|-----|
| 角法 | |
| 比例 | 1:1 |
| 单位 | mm |

| Part Name | Material | Qty |
|------------|-----------|-----|
| W-083 | AL6005-T5 | 1 |
| Bolt M8x12 | SS304 | 2 |



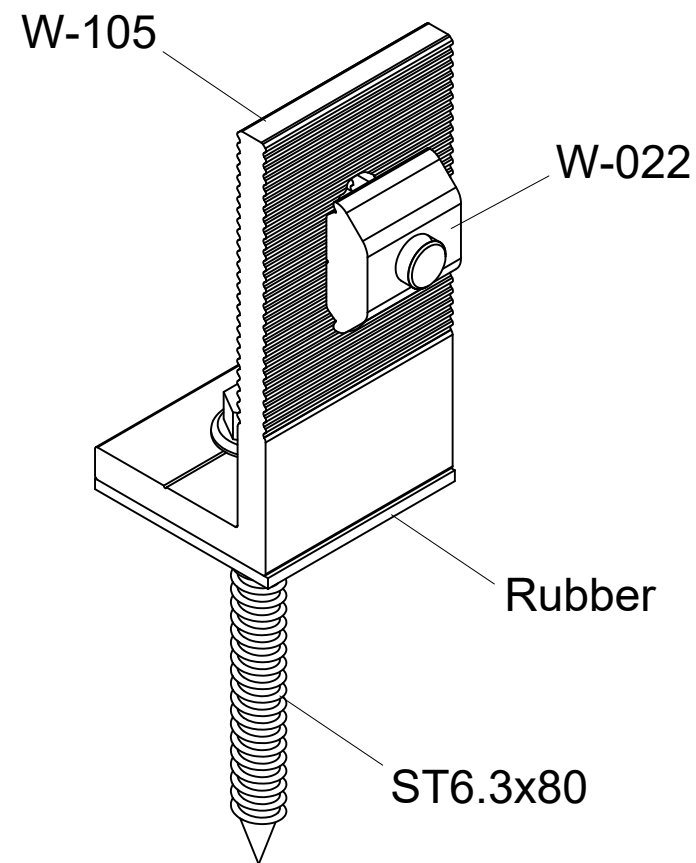
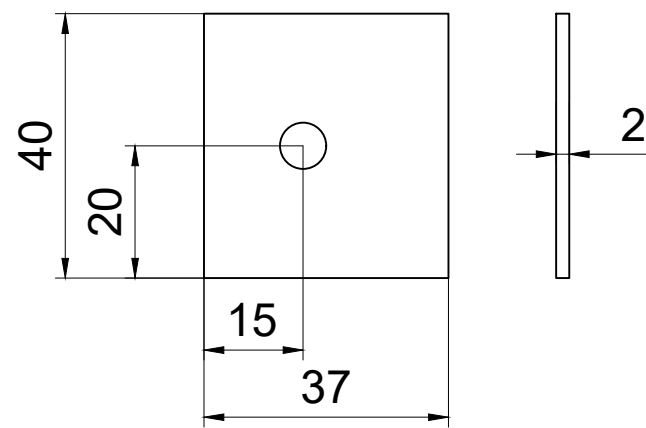
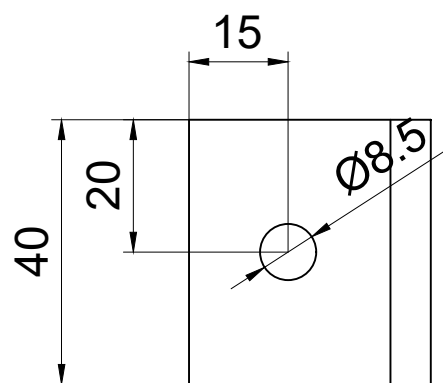
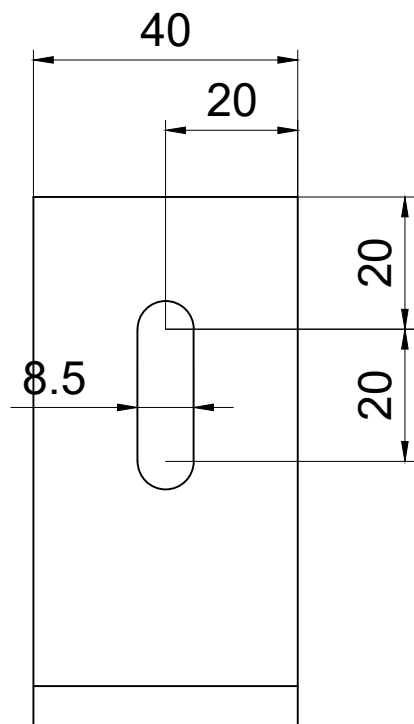
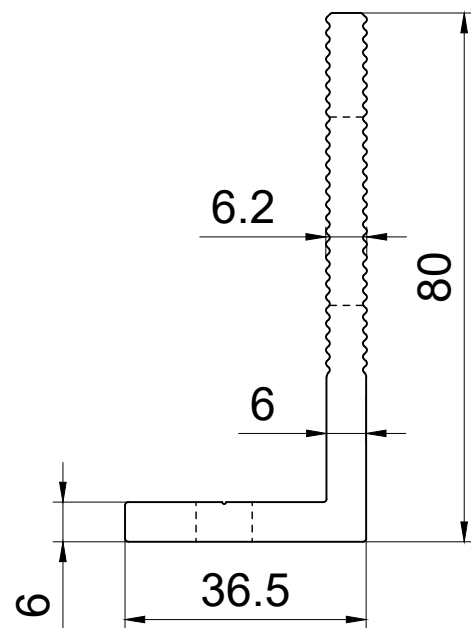
Technical requirement :
 1. Material: 6005 Aluminum anodization.
 2. There is no oil pollution, cracks, corrosion spots, peeling and bad bubbles on the surface of aluminum material.
 3. There is no bending, distortion, deformation and bulge on the sectional view of rail, which is with a flatness of 0.1.

| Tolerance Range | |
|-----------------|------|
| Metric | mm |
| 10≤ | ±0.1 |
| 11-30 | ±0.2 |
| 31-50 | ±0.3 |
| 51-70 | ±0.4 |
| 71-100 | ±0.5 |
| View | |
| Scale | 1:1 |
| Unit | mm |

| | |
|-----------|-----------|
| Date | 202307018 |
| Drawn No. | SR-S |
| Weight | 0.11kg |



| Part Name | Material | Qty |
|---------------|-----------|-----|
| W-105 | AL6005-T5 | 1 |
| W-022 | AL6005-T5 | 1 |
| Bolt M8x25 | SS304 | 1 |
| Washer M8 | SS304 | 2 |
| Spring washer | SS304 | 1 |
| ST6.3x80 | SS410 | 1 |
| Rubber 37x40 | EPDM | 1 |



Technical requirement :

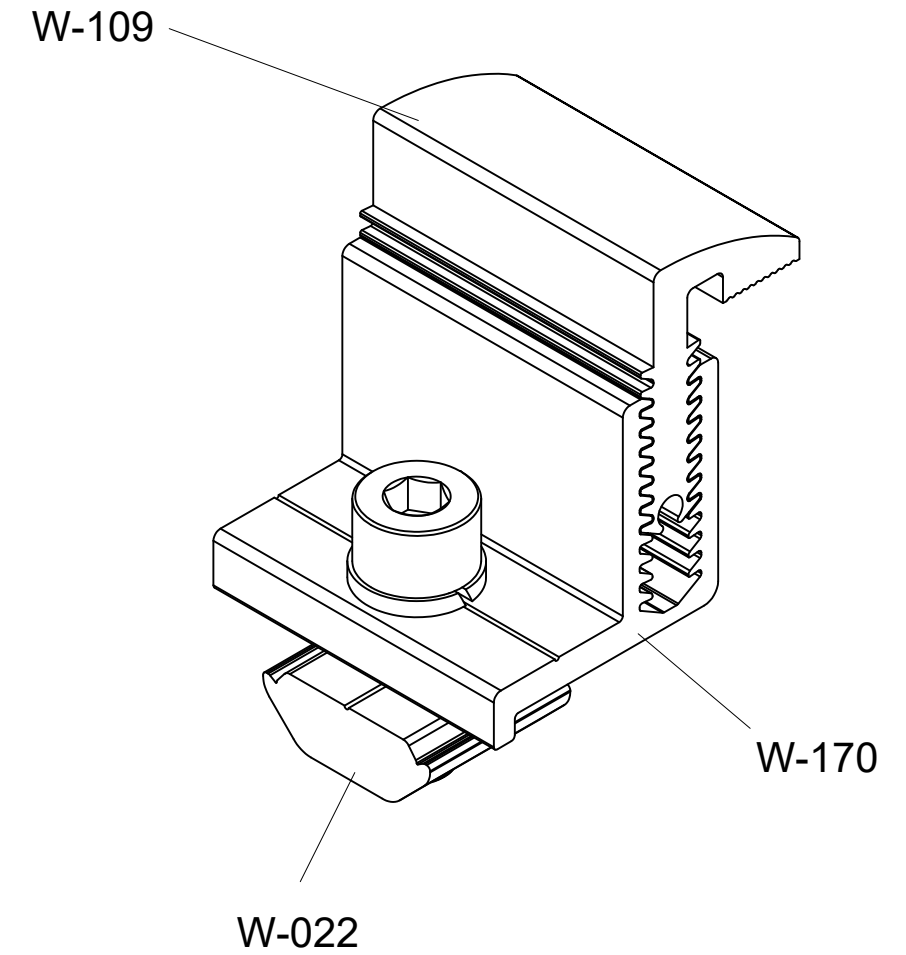
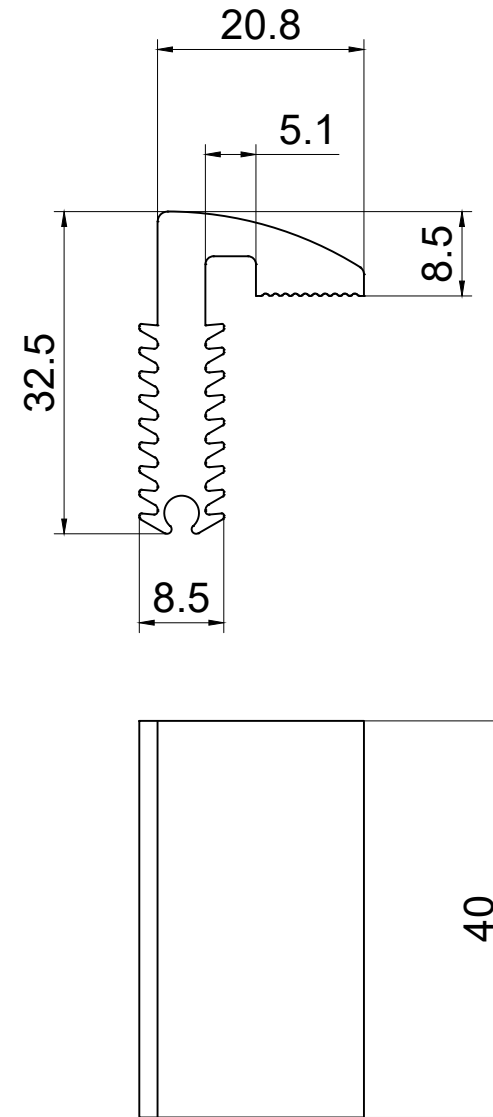
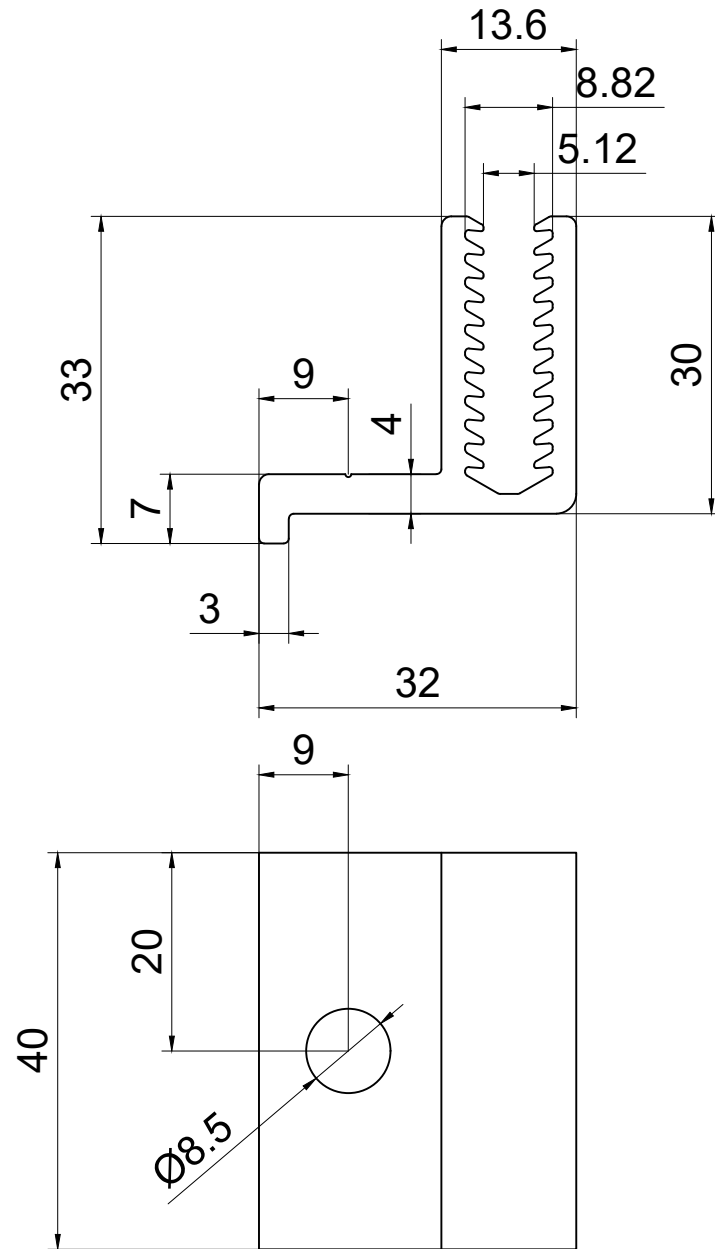
1. Material: 6005 Aluminum anodization.
2. There is no oil pollution, cracks, corrosion spots, peeling and bad bubbles on the surface of aluminum material.
3. There is no bending, distortion, deformation and bulge on the sectional view of rail, which is with a flatness of 0.1.

| Tolerance Range | |
|-----------------|------|
| Metric | mm |
| 10≤ | ±0.1 |
| 11-30 | ±0.2 |
| 31-50 | ±0.3 |
| 51-70 | ±0.4 |
| 71-100 | ±0.5 |
| View | |
| Scale | 1:1 |
| Unit | mm |

| | |
|-----------|-----------|
| Date | 202307018 |
| Drawn No. | WIK-05 |
| Weight | 0.11kg |



| Part Name | Material | Qty |
|---------------|-----------|-----|
| W-109 | AL6005-T5 | 1 |
| W-170 | AL6005-T5 | 1 |
| W-022 | AL6005-T5 | 1 |
| Bolt M8x25 | SS304 | 1 |
| Spring washer | SS304 | 1 |



Technical requirement :

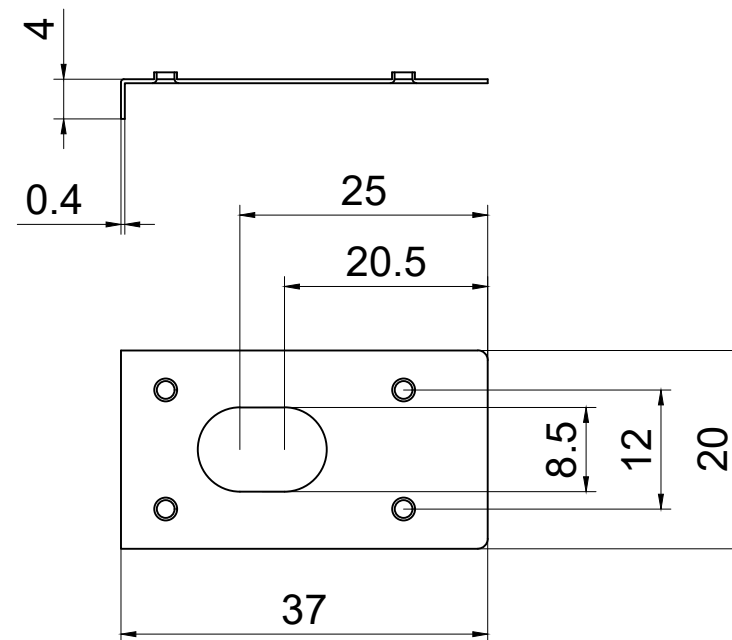
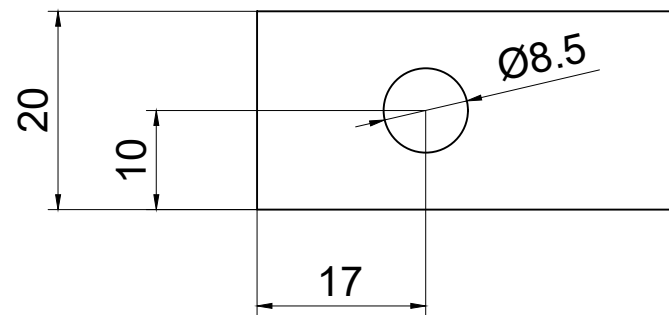
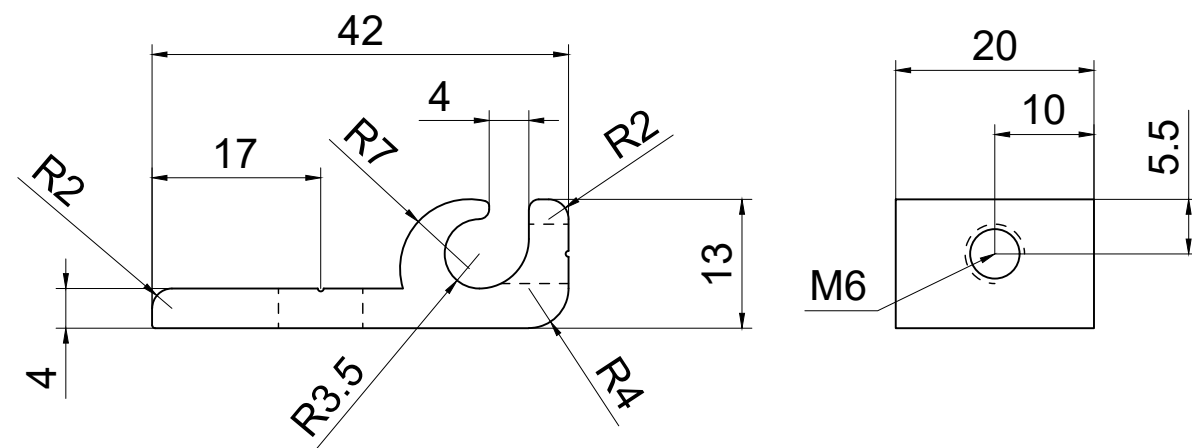
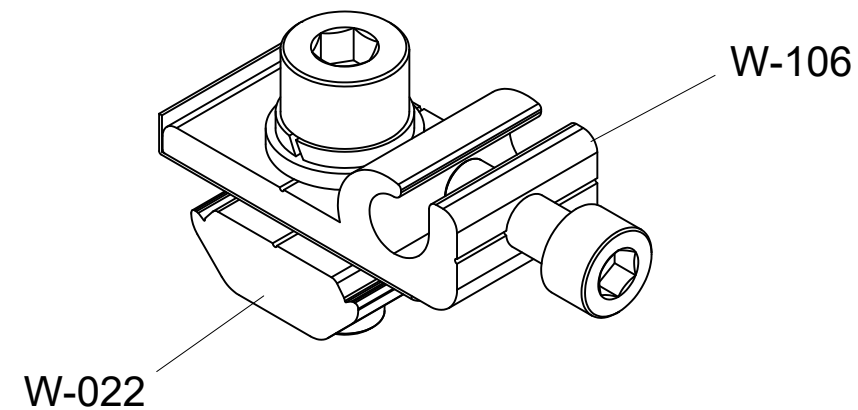
1. Material: 6005 Aluminum anodization.
2. There is no oil pollution, cracks, corrosion spots, peeling and bad bubbles on the surface of aluminum material.
3. There is no bending, distortion, deformation and bulge on the sectional view of rail, which is with a flatness of 0.1.

| Tolerance Range | |
|-----------------|------|
| Metric | mm |
| 10≤ | ±0.1 |
| 11-30 | ±0.2 |
| 31-50 | ±0.3 |
| 51-70 | ±0.4 |
| 71-100 | ±0.5 |
| View | |
| Scale | 1:1 |
| Unit | mm |

| | |
|-----------|-----------|
| Date | 202307018 |
| Drawn No. | WIK-EAD |
| Weight | 8.5kg |



| Part Name | Material | Qty |
|---------------|-----------|-----|
| W-106 | AL6005-T5 | 1 |
| W-022 | AL6005-T5 | 1 |
| Bolt M8x25 | SS304 | 1 |
| Washer M8 | SS304 | 1 |
| Spring washer | SS304 | 1 |
| Ground Clip | SS304 | 1 |
| Bolt M6x16 | SS304 | 1 |



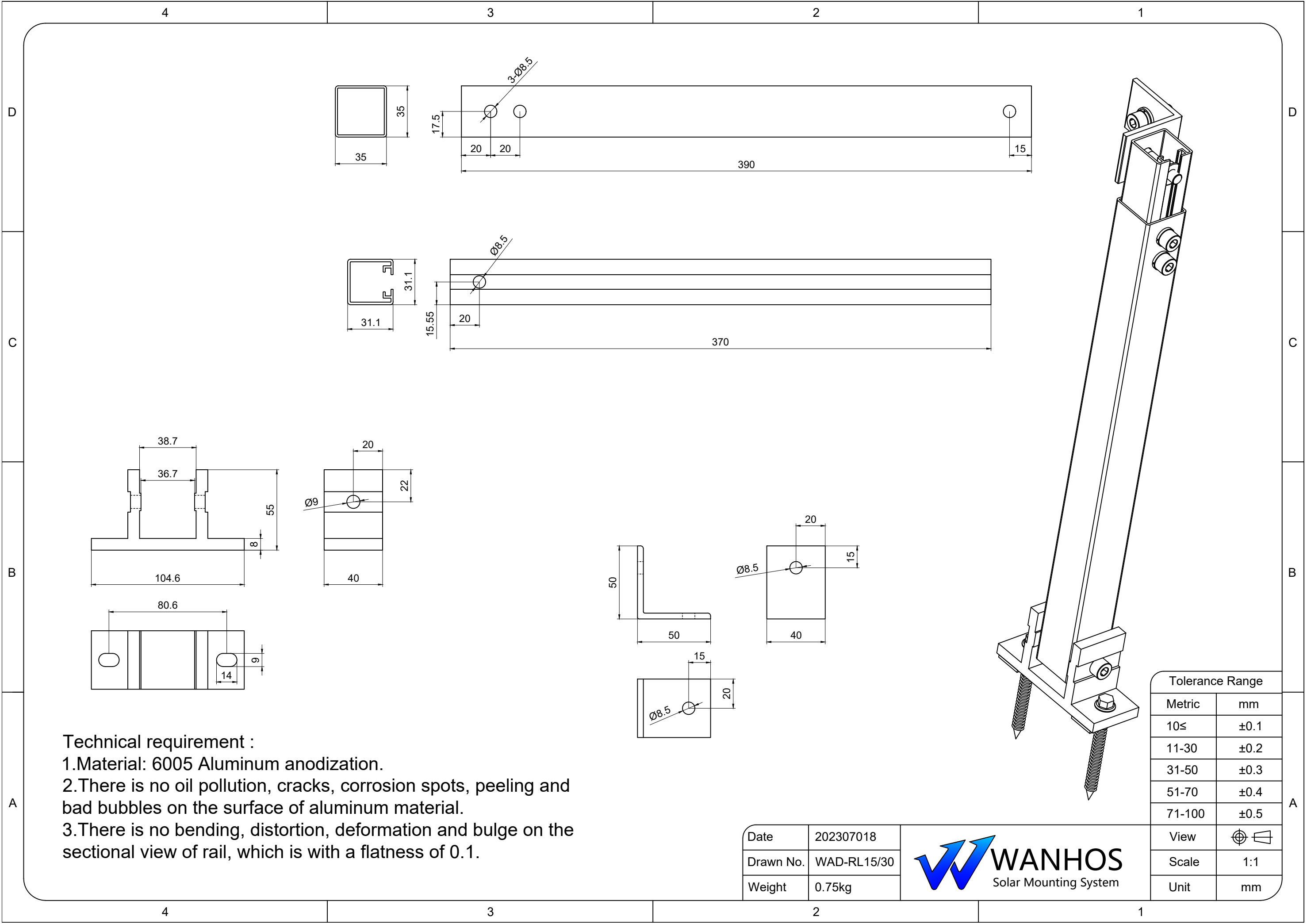
Technical requirement :

1. Material: 6005 Aluminum anodization.
2. There is no oil pollution, cracks, corrosion spots, peeling and bad bubbles on the surface of aluminum material.
3. There is no bending, distortion, deformation and bulge on the sectional view of rail, which is with a flatness of 0.1.

| | |
|-----------|-------------|
| Date | 202307018 |
| Drawn No. | WHS-WG-GL-U |
| Weight | 0.045kg |



| Tolerance Range | |
|-----------------|------|
| Metric | mm |
| 10≤ | ±0.1 |
| 11-30 | ±0.2 |
| 31-50 | ±0.3 |
| 51-70 | ±0.4 |
| 71-100 | ±0.5 |
| View | |
| Scale | 1:1 |
| Unit | mm |



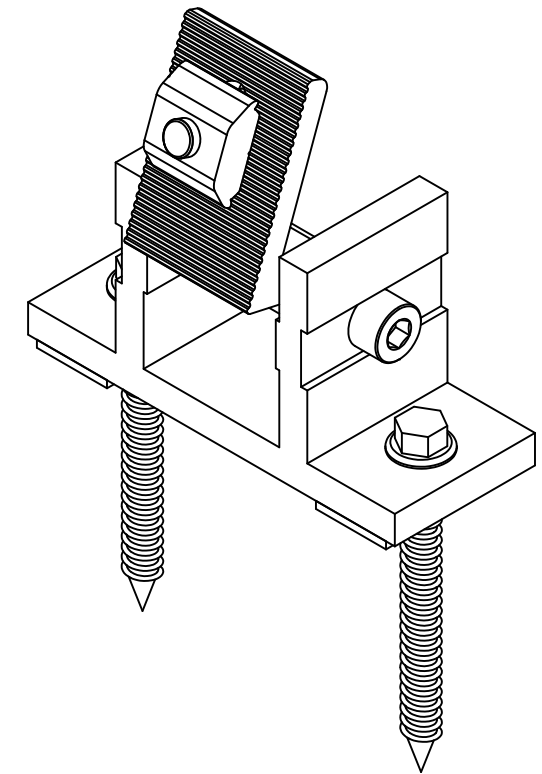
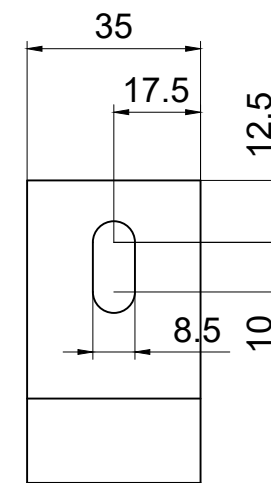
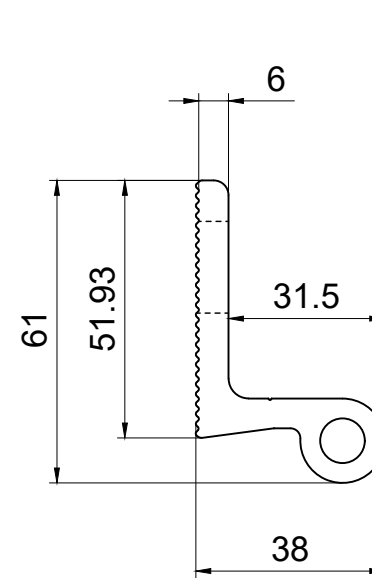
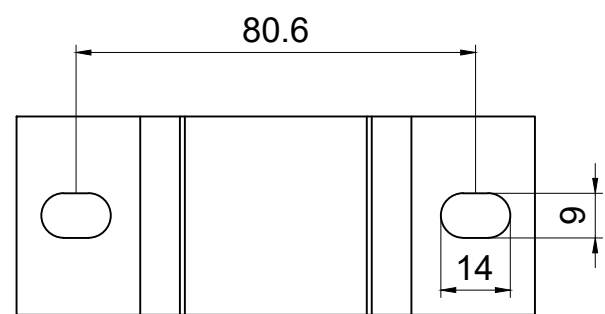
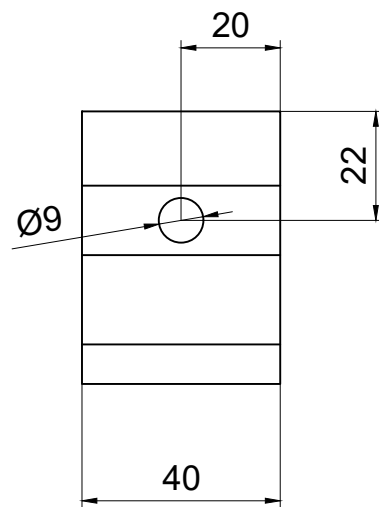
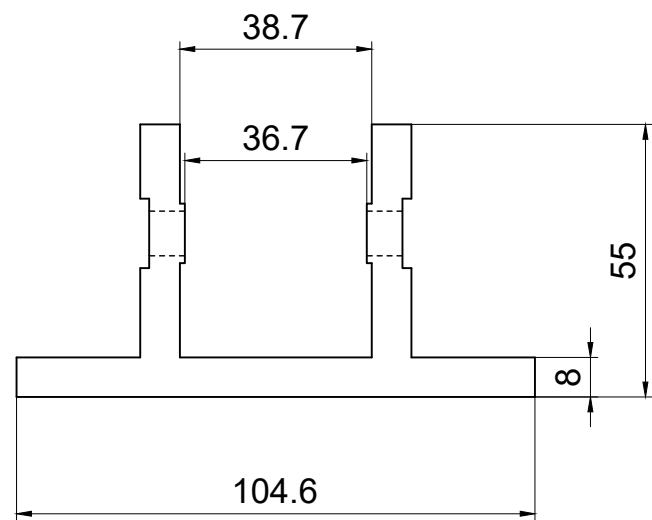
Technical requirement :

- 1.Material: 6005 Aluminum anodization.
- 2.There is no oil pollution, cracks, corrosion spots, peeling and bad bubbles on the surface of aluminum material.
- 3.There is no bending, distortion, deformation and bulge on the sectional view of rail, which is with a flatness of 0.1.

| | |
|-----------|-------------|
| Date | 202307018 |
| Drawn No. | WAD-RL15/30 |
| Weight | 0.75kg |



| Tolerance Range | |
|-----------------|------|
| Metric | mm |
| 10≤ | ±0.1 |
| 11-30 | ±0.2 |
| 31-50 | ±0.3 |
| 51-70 | ±0.4 |
| 71-100 | ±0.5 |
| View | |
| Scale | 1:1 |
| Unit | mm |



Technical requirement :

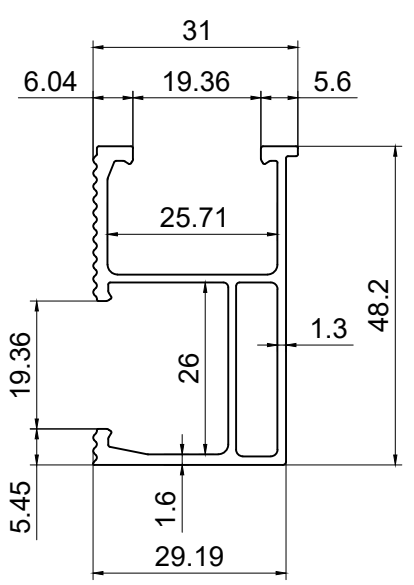
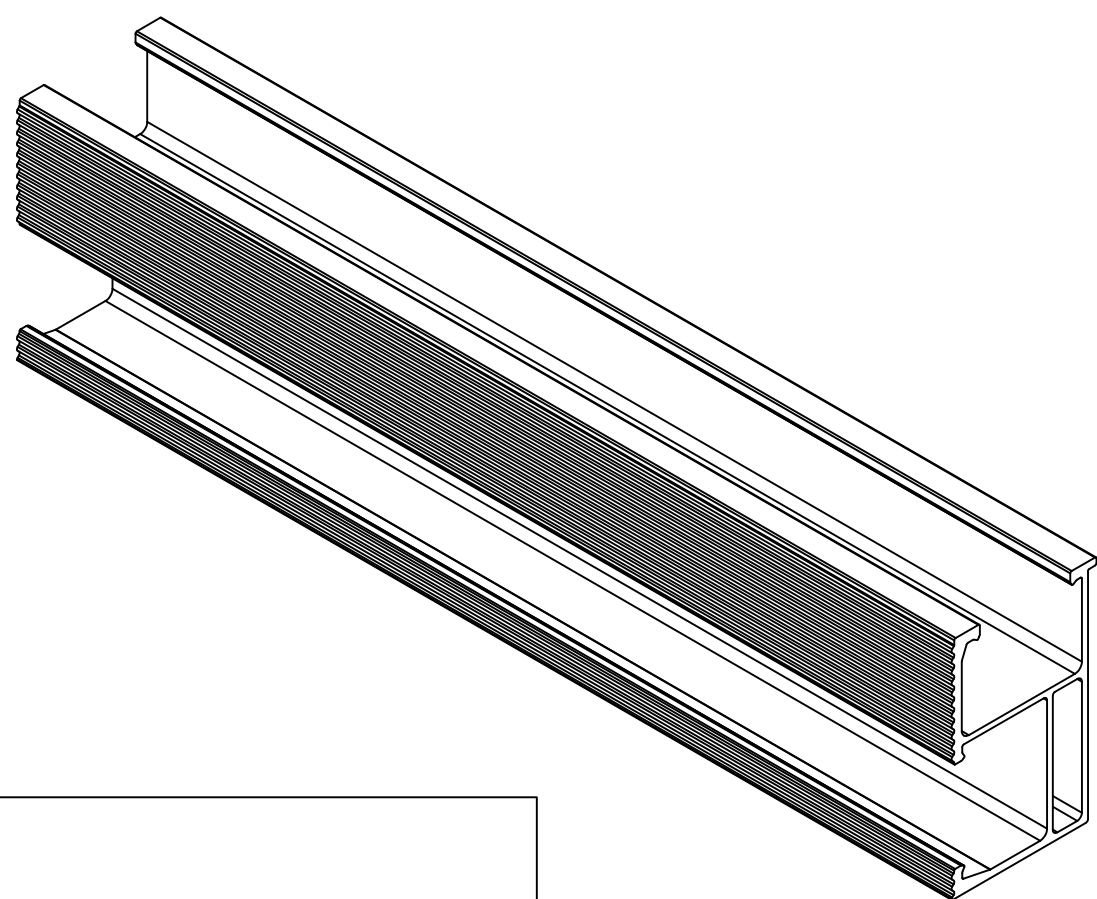
1. Material: 6005 Aluminum anodization.
2. There is no oil pollution, cracks, corrosion spots, peeling and bad bubbles on the surface of aluminum material.
3. There is no bending, distortion, deformation and bulge on the sectional view of rail, which is with a flatness of 0.1.

| Tolerance Range | |
|-----------------|------|
| Metric | mm |
| 10≤ | ±0.1 |
| 11-30 | ±0.2 |
| 31-50 | ±0.3 |
| 51-70 | ±0.4 |
| 71-100 | ±0.5 |
| View | |
| Scale | 1:1 |
| Unit | mm |

| | |
|-----------|-----------|
| Date | 202307018 |
| Drawn No. | WAD-FL |
| Weight | 0.21kg |



| Part Name | Material | Qty |
|-----------|-----------|-----|
| W-088 | AL6005-T5 | 1 |



Technical requirement :

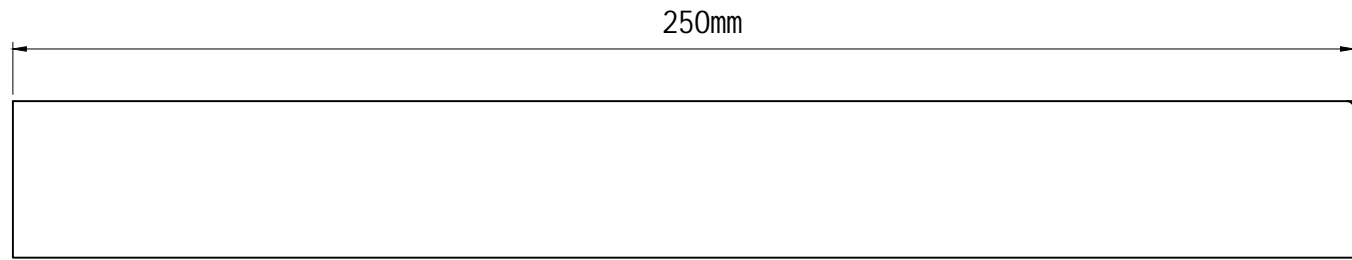
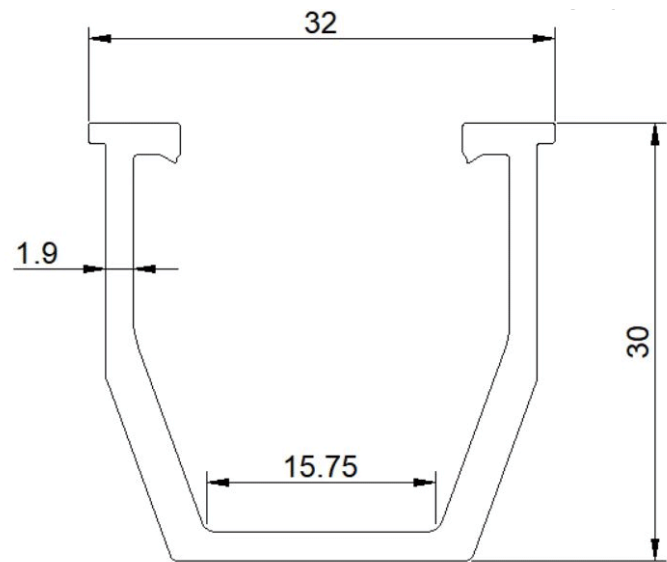
1. Material: 6005 Aluminum anodization.
2. There is no oil pollution, cracks, corrosion spots, peeling and bad bubbles on the surface of aluminum material.
3. There is no bending, distortion, deformation and bulge on the sectional view of rail, which is with a flatness of 0.1.
4. Length from 2.5m to 4.7m

| Tolerance Range | |
|-----------------|------|
| Metric | mm |
| 10≤ | ±0.1 |
| 11-30 | ±0.2 |
| 31-50 | ±0.3 |
| 51-70 | ±0.4 |
| 71-100 | ±0.5 |
| View | |
| Scale | 1:1 |
| Unit | mm |

| | |
|-----------|-----------|
| Date | 202307018 |
| Drawn No. | SR-XXXX |
| Weight | 0.664kg/m |



| Part Name | Material | Qty |
|-----------|-----------|-----|
| W-088 | AL6005-T5 | 1 |



Technical requirement :

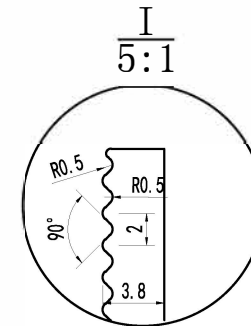
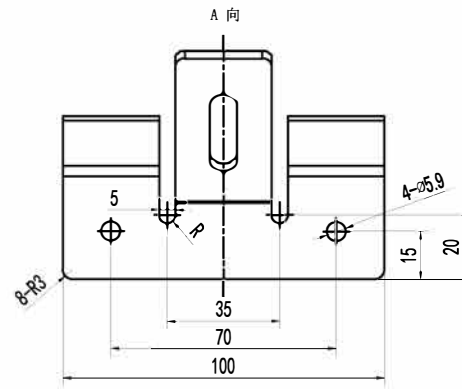
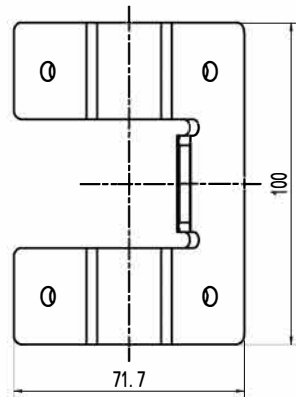
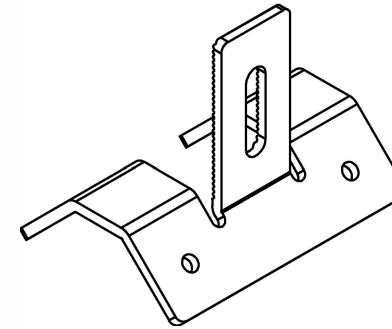
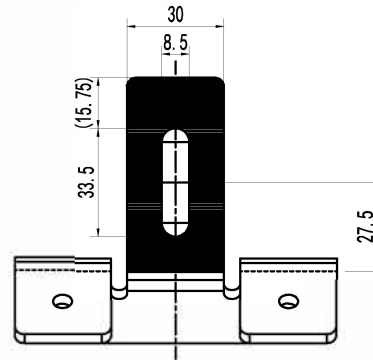
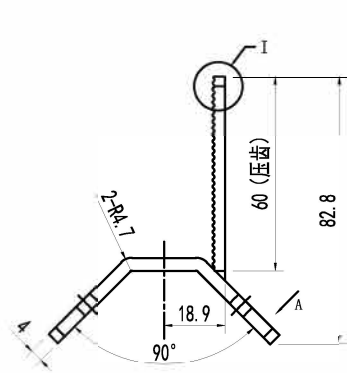
1. Material: 6005 Aluminum anodization.
2. There is no oil pollution, cracks, corrosion spots, peeling and bad bubbles on the surface of aluminum material.
3. There is no bending, distortion, deformation and bulge on the sectional view of rail, which is with a flatness of 0.1.

| Tolerance Range | |
|-----------------|------|
| Metric | mm |
| 10≤ | ±0.1 |
| 11-30 | ±0.2 |
| 31-50 | ±0.3 |
| 51-70 | ±0.4 |
| 71-100 | ±0.5 |
| View | |
| Scale | 1:1 |
| Unit | mm |

| | |
|-----------|---------------|
| Date | 202307018 |
| Drawn No. | WHS-WIK-U-250 |
| Weight | 0.664kg/m |



| 版别 | 记号 | 变更记录 | 签名 | 时间 |
|----|----|------|----|----|
| | △ | | | |
| | △ | | | |
| | △ | | | |



技术要求:

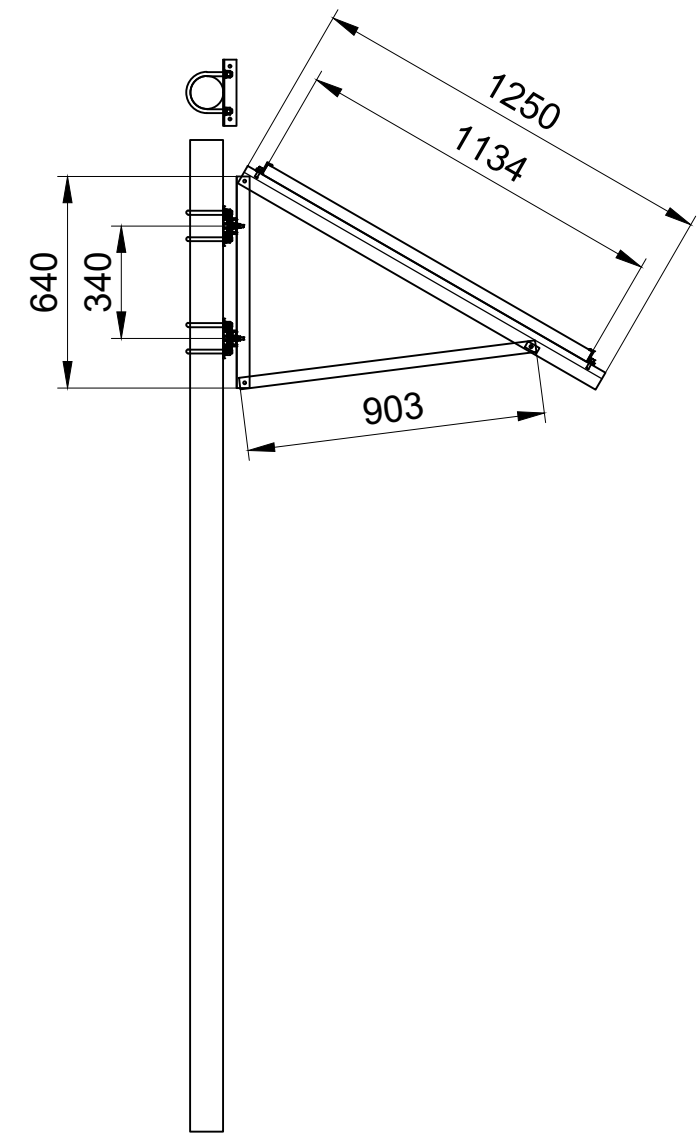
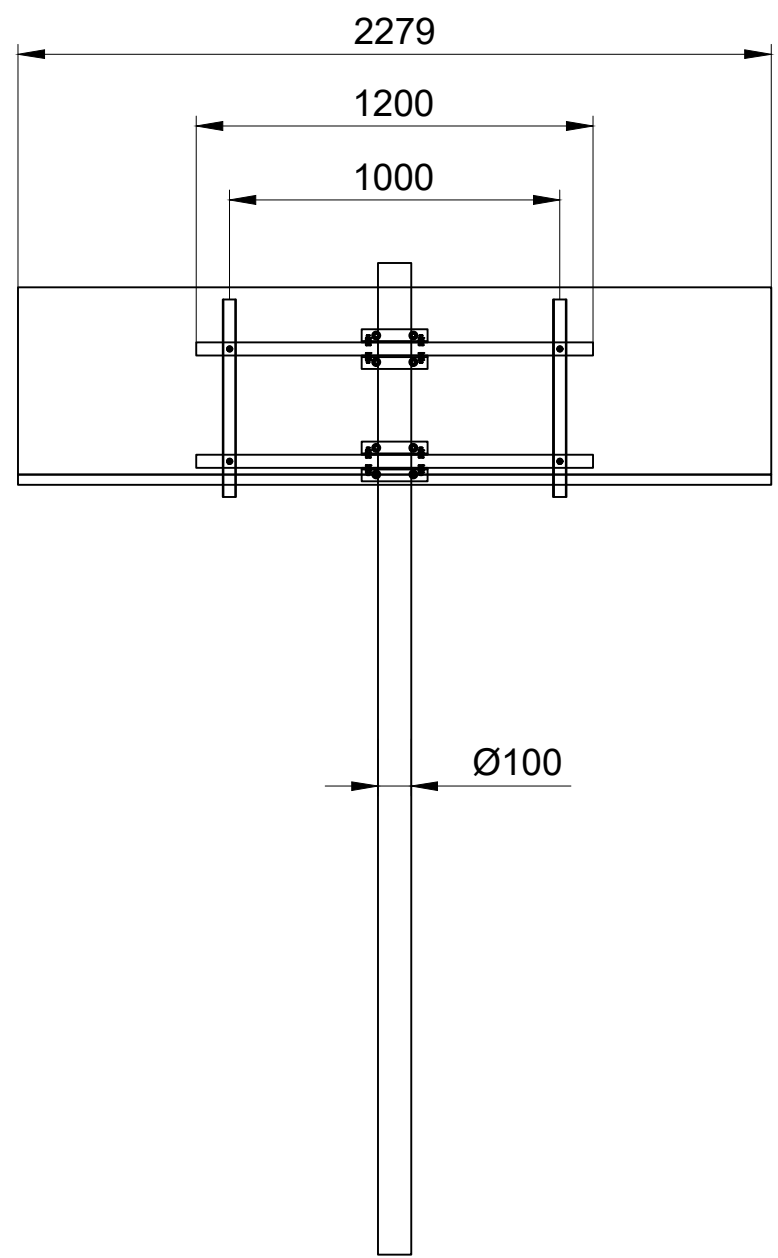
1. 产品断面平整, 无锐边、尖角、毛刺等;
2. 未注公差按 (GB/T 1804-2000) 公差等级 m 级 (中等级);
3. 未注角度为直角;
4. 表面处理要求按客户订单要求为准。

| | | | | | |
|----|----|------|----------|-----|------------|
| 设计 | 日期 | 材料 | SUS304 | 图号 | WHS-WIK-07 |
| 绘图 | 日期 | 重量 | 0.279 Kg | 模具号 | |
| 核准 | 日期 | 表面处理 | | 图名 | 11#单件挂钩 |
| 承认 | 日期 | 版本 | 第一版 | | |

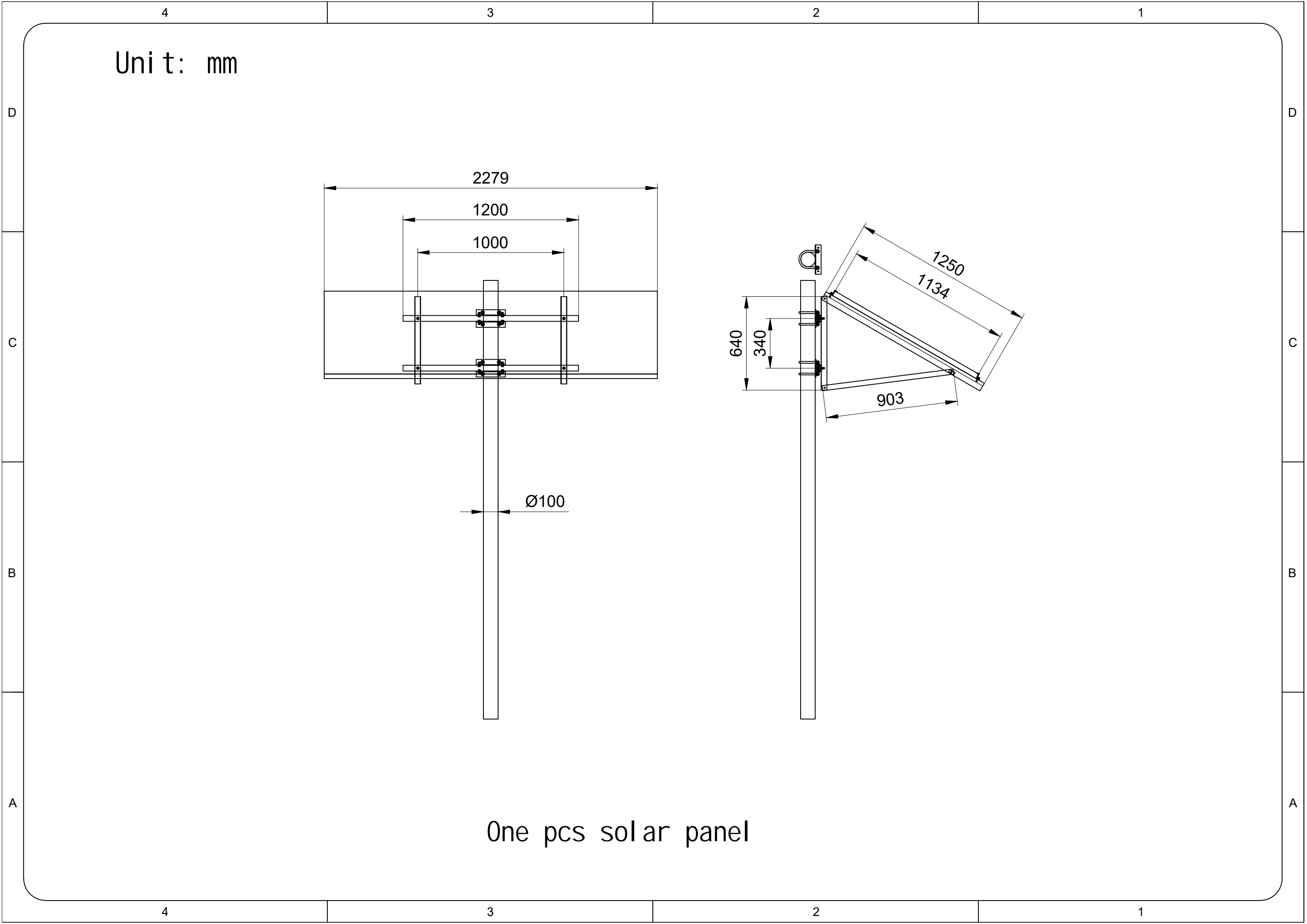
 **WANHOS**
Solar Mounting System

| | |
|----|---|
| 角法 |  |
| 比例 | 1:1 |
| 单位 | mm |

Unit: mm



One pcs solar panel



4

3

2

1

Unit: mm

D

D

C

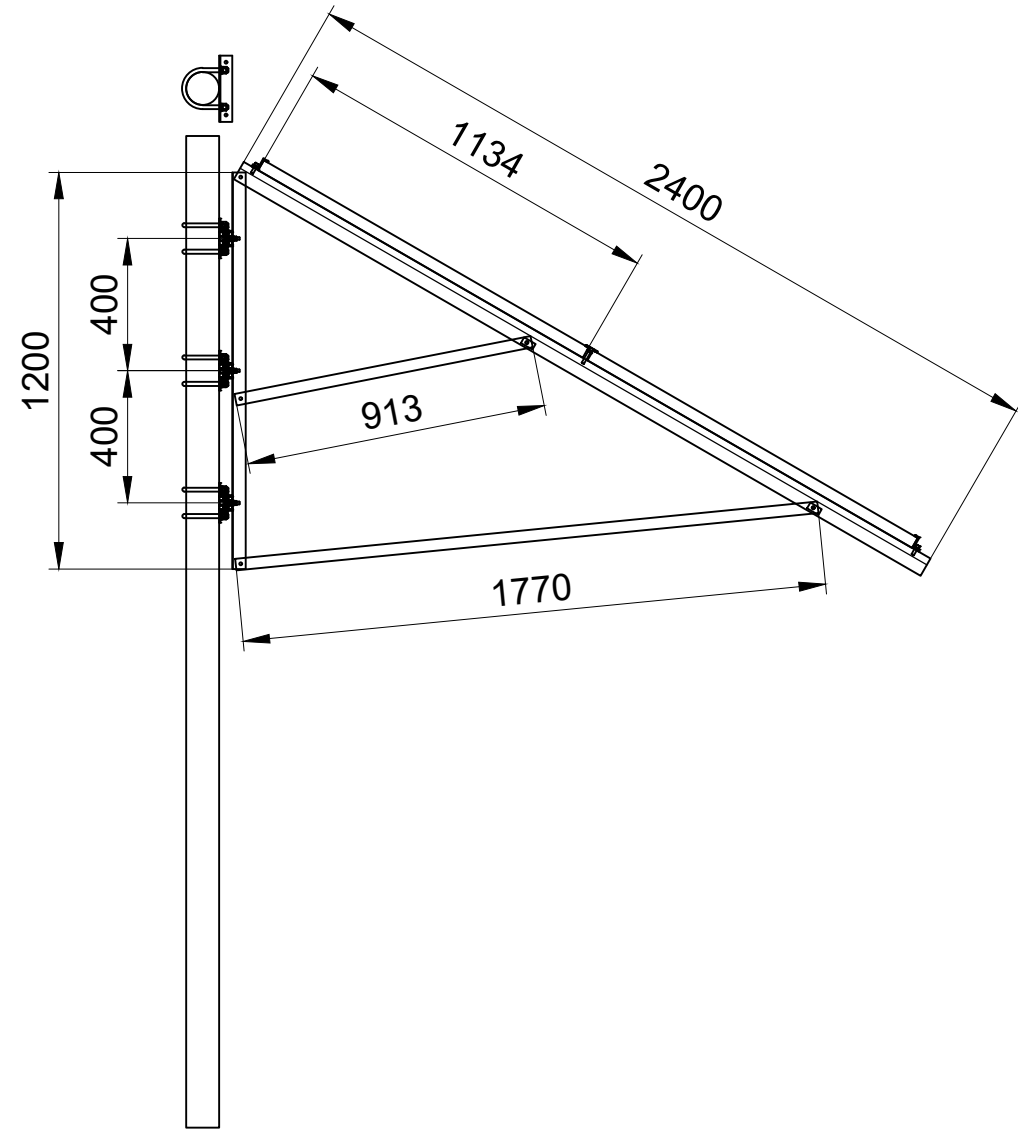
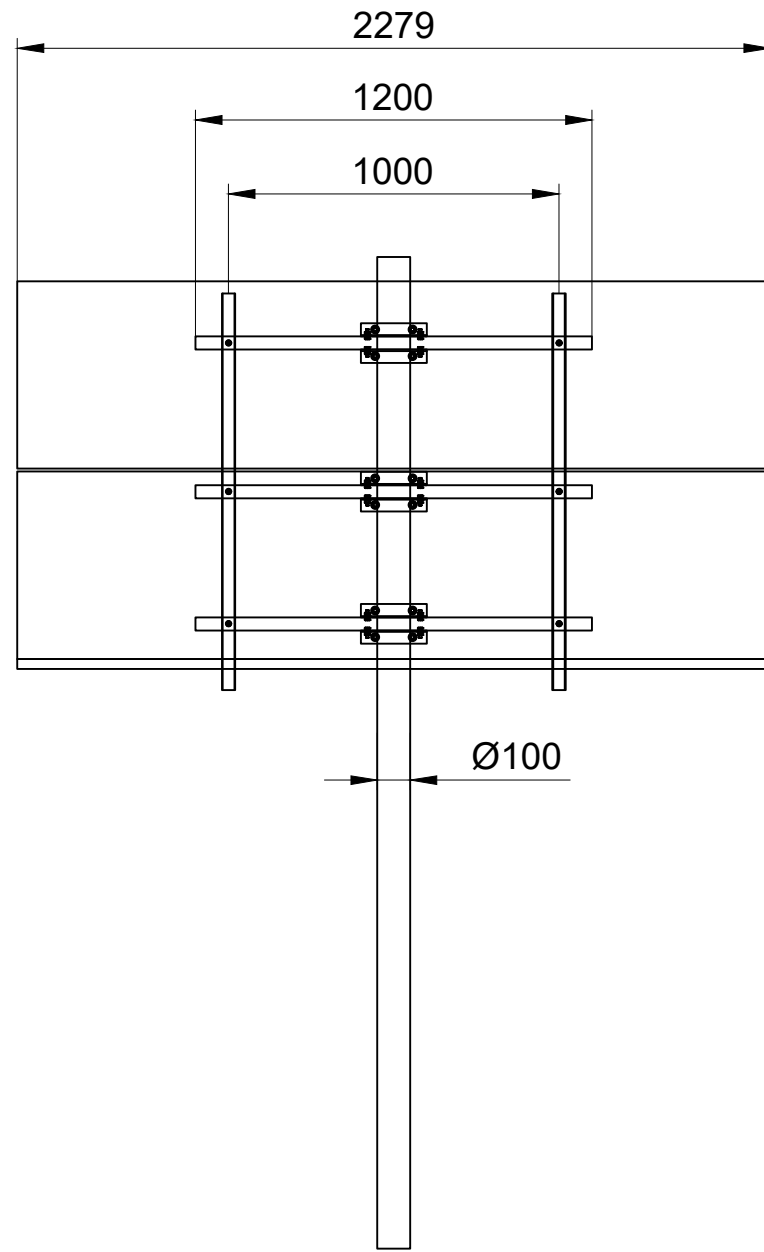
C

B

B

A

A



Two pcs solar panels

4

3

2

1